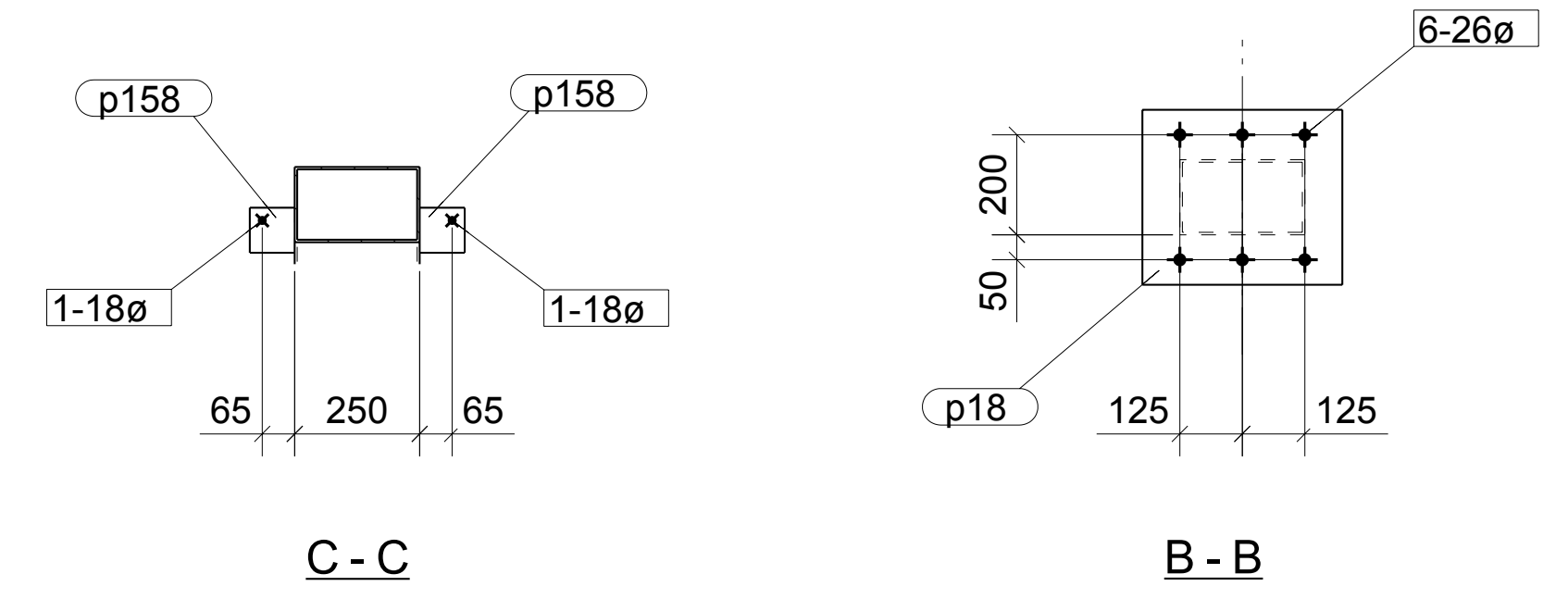


MATERIAL LIST FOR 1 ASSEMBLIES MK TR14

ITEM	QTY.	SECTION	LENGTH	GRADE	WEIGHT(kg)	AREA(m2)
M2	1	RHS250*150*5.0	7955	350	237.93	6.20
p2	1	RHS250*150*5.0	7986	350	238.85	6.22
p11	2	EA50*50*6	1823	300PLUS	16.25	0.73
p12	2	EA50*50*6	1741	300PLUS	15.52	0.70
p13	2	EA65*65*6	2793	300PLUS	32.80	1.45
p14	2	EA65*65*6	2351	300PLUS	27.61	1.22
p15	2	EA65*65*6	2348	300PLUS	27.57	1.22
p18	4	PL32*350	400	250	140.67	1.31
p21	6	FL8*75	145	250	4.10	0.15
p84	1	FL12*250	350	250	8.24	0.19
p85	1	FL12*250	350	250	8.24	0.19
p158	2	FL10*90	90	250	1.27	0.04
TOTAL					759.06	19.62



1 TRUSS REQUIRED MK TR14

GENERAL NOTES

- ALL WELDS 6 CONT. FILLET U.N.O.
- CLEATS ARE ON CL OF MEMBER U.N.O.
- HOLES ARE LOCATED ON OR ABOUT CL U.N.O.
- ALL BUTT WELDS ARE FULL PENETRATION U.N.O.
- PAIN AS PER SPECIFICATION.
- NO PAINT IN WAY OF TF BOLT CONNECTIONS.
- THIRD ANGLE PROJECTION UNLESS NOTED.
- ASSEMBLY MARK TO BE STAMPED ON TOP FACE WHERE INDICATED BY "MARK".

B	ISSUED FOR FABRICATION	05-06-08
A	ISSUED FOR APPROVAL	15-05-08
REV	REVISION DESCRIPTION	REV. DATE

G & R SHOP DETAILING
 11 The Boulevard
 Brisbane Island.
 Qld. 4507.
 Ph. 07 34082944
 Fax. 07 34080151
 graeme@grshopdetailing.com.au

TEKLA Structures®

PROJECT		LOT 2 PROSPECT PLACE BERRINBA	
CLIENT		B & L STEEL P/L	
DRAWN	GP	SCALE	1:14
CHECKED	DATE	20.05.2008	DRAWING No. 227 - TR14
			REV B